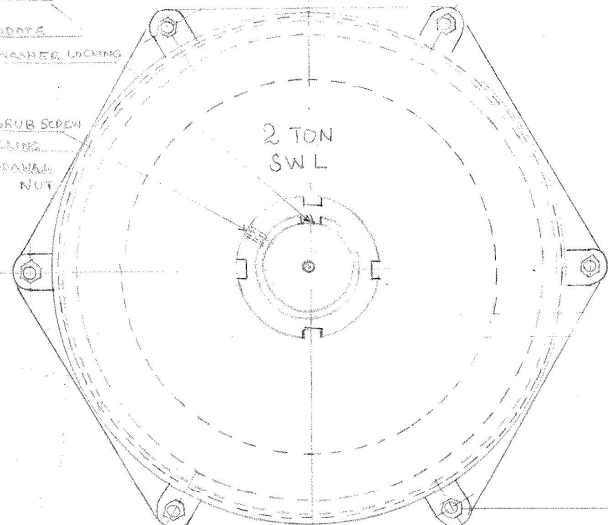
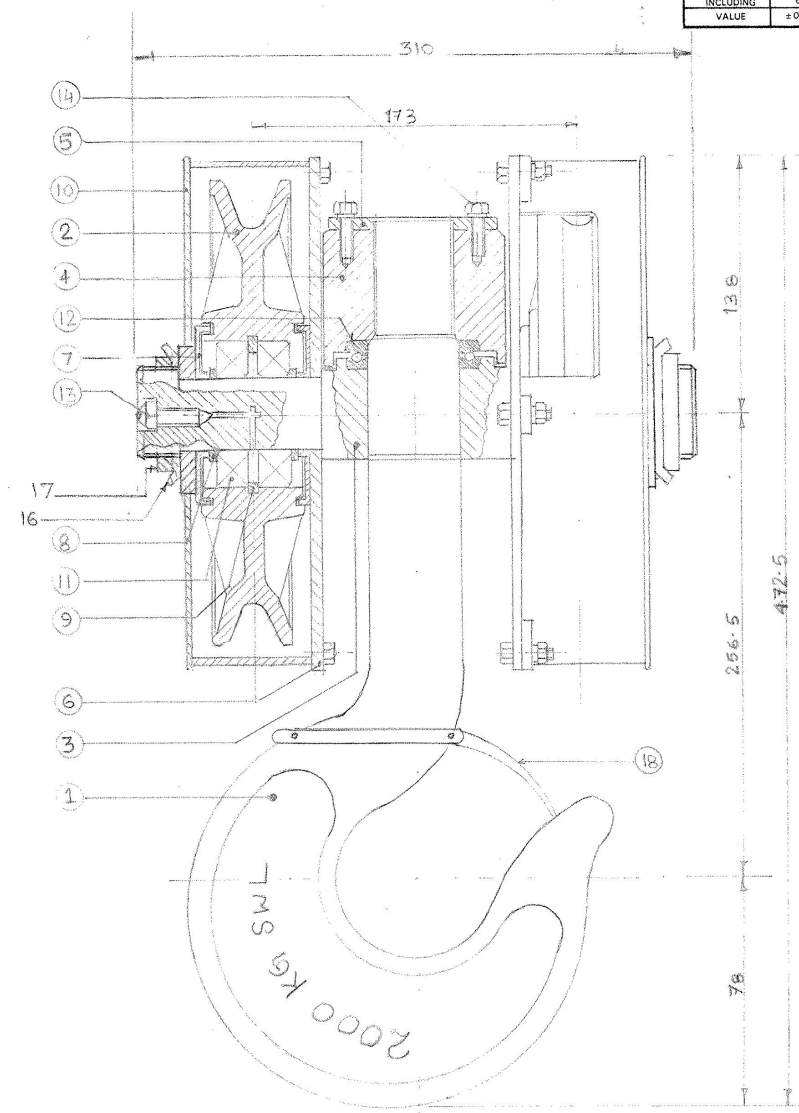
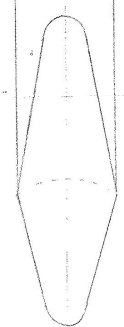


KEY WAY TO  
ACCOMMODATE  
STAR WASHER LOCKING

4  $\phi$  GRUB SCREW  
FOLDING  
WITH DRAWAL  
NUT



2 TON  
SWL



MACHINING DEVIATIONS FOR LINEAR DIMENSIONS									
ABOVE UPTO AND INCLUDING	6	6	30	120	315	1000	2000	4000	THE REST
VALUE	$\pm 0.1$	$\pm 0.2$	$\pm 0.3$	$\pm 0.5$	$\pm 0.8$	$\pm 1.2$	$\pm 2$	$\pm 3$	

DESCRIPTION DETAILS OF HOOK AND PULLEYS  
 1. HOOK :- STANDARD TRAPEZOIDAL CROSS  
 SECTIONAL SHANK HOOK AS PER IS  
 3815 -1969 MADE OUT OF FORGED STEEL  
 MATERIAL EN-3 AS PER IS-1875-1966  
 2. PULLEYS :- 200 MM ROOT DIA ROPE PULLEYS TO  
 ACCOMMODATE 10 MM  $\phi$  WIRE ROPE  
 MADE OUT OF CAST STEEL AS PER  
 G.R.I IS 1030

SLNO	DESCRIPTION	QTY	MATERIAL
1	STANDARD TRAPEZOIDAL CROSS SECTIONAL SHANK HOOK AS PER IS:3815-1969	1	FORGED STEEL EN-3 AS PER IS 1875-1966
2	200 ROOT DIA ROPE PULLEY TO ACCOMMODATE 10 MM $\phi$ STEEL WIRE ROPE	2	CAST STEEL AS PER IS:1030
3	CROSS HEAD	1	M.S
4	HOOK NUT	1	M.S
5	LOCKING PLATE FOR NUT	1	M.S
6	LOCKING PLATE FOR PULLEY GUARD	2	M.S
7	BEARING COVER	4	C.I
8	SPACER	4	M.S
9	CIR CLIP (C.I. RING)	2	
10	PULLEY GUARD	2	M.S
11	RADIAL BEARING NO: 6010 SKF MAKE ONLY	4	
12	THRUST BEARING NO 51106 SKF MAKE ONLY	1	
13	M6 $\phi$ GREASE NIPPLE	2	M.S
14	M6 $\phi$ X 18 MM LONG BOLT WITH STD SPRING WASHER	2	C45 25HRC
15	M6 $\phi$ X 22 MM LONG BOLT WITH STD NUTS AND SPRING WASHER	12	C45 20HRC
16	LOCKING WASHER	2	
17	WITHDRAWAL NUT	2	M.S
18	HOOK LATCH WITH SPRING AS PER STANDARD DESIGN	1	M.S

NOTE:-  
 I. MANUFACTURER'S TEST CERTIFICATE TO BE PRODUCED ALONG  
 WITH THE MATERIAL FOR :- 1. HOOK MATERIAL AND HARDNESS.  
 2. PULLEY FOR HARDNESS  
 II. THE HOOK BLOCK TO BE SUPPLIED IN COMPLETE ASSY  
 III. THE HOOK SHOULD BE PAINTED BLACK  
 IV. REST OF THE PORTION TO BE PAINTED BLACK AND  
 GOLDEN YELLOW IN THE ZEBRA FASHION  
 V. ALL DIMENSIONS ARE IN MM.

FOLLOWING LETTERS TO BE EMBOSSED ON THE  
 HOOK AS PER THE DRAWING :-  
 2000 KG SWL ON THE HOOK

2 TON  
SWL  
ON THE OUTSIDE OF THE  
ENCLOSURE

PRODUCT				DESIGN REF.	
USED ON	QTY.	MATERIAL		H.T.	
TITLE				SHEET NO.	
2T WM SNATCH BLOCK SUB-ASSY				NO. OF SHEETS	
ECN NO.	AMEND NO.	SIGNATURE	DATE	DRG. NO.	
	APPROVED			Bharat Earth Movers Ltd.	
	REVIEWED			KGF	
	CHECKED			ESE-227-CR	
	DRAWN				
	STD.				